

TwoBrieye[™]

Brinzolamide & Brimonidine Tartrate Ophthalmic Suspension

COMPOSITION:

Brinzolamide IP	1% w/v
Brimonidine Tartrate IP equivalent to Brimonidine	0.2% w/v
Water for injections IP	q.s

PRODUCT INTRODUCTION

TwoBrieye Eye Drop is a combination of Brimonidine and Brinzolamide which belongs to the group of medicines called Ophthalmic anti-glaucoma agents. It is used in adults to treat ocular hypertension and glaucoma (increased pressure within the eyes). It is typically used in patients who are not responding well to therapy with single agents.

USES OF TWOBRIEYE EYE DROP

Treats ocular hypertension and glaucoma in adults

HOW TWOBRIEYE EYE DROP WORKS

TwoBrieye Eye Drop works by decreasing the production of excessive eye fluids (aqueous humour) while simultaneously increasing their drainage. As a result, it reduces strain on the eyes which therefore reduces elevated intraocular pressure.

SIDE EFFECTS OF TWOBRIEYE EYE DROP

The most common side effects of using TwoBrieye Eye Drop are eye pain, redness, discomfort, irritation, itching or inflammation, blurred vision and bad taste. Consult your doctor if they trouble you for longer time.

WARNING & PRECAUTIONS

Consult your doctor before using TwoBrieye Eye Drop if you are pregnant or breastfeeding.

Inform your doctor if you have any liver, kidney or heart problems before using TwoBrieye Eye Drop.

You must also inform your doctor if you have low or high blood pressure, narrow-angle glaucoma, dry eyes, depression or poor blood circulation in your body as a precaution.

Avoid the consumption of alcohol while using TwoBrieye Eye Drop as it may increase the risk of side effects.

Do not drive or operate any heavy tools or machines if you experience blurred vision, drowsiness or tiredness after using TwoBrieye Eye Drop.

Talk to your doctor if you are allergic to Brimonidine, Brinzolamide, sulphonamides (such as glipizide, gliclazide) or diuretics (such as furosemide).

USE IN PEDIATRICS

TwoBrieye Eye Drop is generally not recommended for use in children and adolescents (aged below 18 years). Therefore, consult your doctor before using it.

DOSSAGE: The recommended dose is one drop of TwoBrieye in the affected eye(s) two times daily.

OVERDOSAGE

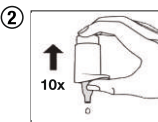
If you or anyone else accidentally used more TwoBrieye Eye Drop, rinse your eye with warm water. If still irritation persists, consult your doctor.

DIRECTIONS FOR USE

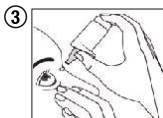
Use TwoBrieye Eye Drop as advised by your doctor. It is for ophthalmic use only. Wash your hands before use. Patients should be instructed to shake the bottle well before use. If you wear soft contact lenses, remove the lens before using TwoBrieye Eye Drop and wait for at least 15 minutes before reinsertion.



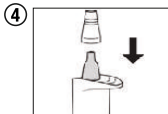
Wash your hands before using the TwoBrieye. Shake well before use. Remove the protective cap from the tip of the bottle. Make sure that the tip of the bottle does not touch anything.



To Activate the pump for the first time, hold the bottle upside down as shown in the figure and with the help of thumb rest press repeatedly unless first drop appears. Now the bottle is ready to use.



Now tilt your head a little back (neck position) and pull the lower eyelid with the free one hand slightly away from the eye. Hold the bottle as shown and press the comfort grip to apply one or two drops into the eyes. Close your eyes.



Reclose the bottle with protective cap after every use.

Marketed by:



Division of:
Kilitch Healthcare India Ltd.

Manufactured in India by:

KH KILITCH HEALTHCARE INDIA LTD.
R-904, 905, T.T.C. Industrial Area, M.I.D.C.,
Navi Mumbai, Dist. Thane, Rabale - 400 701.